

The Horizon 2020 project RiskGONE has been on a journey of almost 5 years, defining a risk governance (RG) process for engineered nanomaterials, based on the revision, adaptation and pre-validation of existing risk assessment and RG frameworks and tools for conventional chemicals.

**The Climate and Environmental Research Institute NILU** acted as project coordinator and partner involved in all the WPs of the project. Some of NILU's main activities and outcomes are here reported.

## WP1 - SCIENTIFIC COORDINATION AND MANAGEMENT

As project coordinator, **NILU** thanks all the 22 partners for the scientific effort and fruitful and pleasant collaboration, which resulted in numerous publications, reports, Standard Operating Procedures and pre-validated Test Guidelines related to environmental and human health, and social, economic, and ethical aspects. It was a pleasure to coordinate such a great project and Consortium.

## WP2 - RISK GOVERNANCE

- Support to the development of the RiskGONE cloud platform and the NMBP-13 portal
- Development of data collection templates for the methods:
  - Comet assay
  - CFE
  - Alamar Blue
  - HPRT
  - Endotoxin detection

## WP4 - CHARACTERISATION

- Pre-validated guidance on the determination of ENMs endotoxins content – D4.4
- ENMs characterization in stock and medium (NTA, DLS)

ENM identifier	Particles concentration tested (µg/ml) +/- endotoxin (E)	EU/ml	Difference with EU spiked-1	Acceptance requisite: +/- 25%	Validity
ERM00000085	1.0	2,75	-0,09	-105,42	Invalid
ERM00000085	1.0	2,66			
ERM00000086	1.0	2,72	0,67	-32,51	Invalid
ERM00000086	1.0	3,39			
ERM00000083	1.0	4,47	-0,80	-179,68	Invalid
ERM00000083	1.0	3,67			
ERM00000063	100	-0,81	0,17	-82,84	Invalid
ERM00000063	1.0	0,30	-70,02		Invalid
ERM00000063	1.0	0,26			
ERM00000065	100	-0,03	0,61	-38,53	Invalid
ERM00000065	100+E	0,58			
ERM00000065	1.0	0,05	1,06	5,75	Valid
ERM00000065	1.0+E	1,10			
ERM00000062	100	0,02	1,11	11,47	Valid
ERM00000062	100+E	1,14			

## WP3 - GUIDELINES FOR RISK-BENEFIT ASSESSMENT

- Draft Guidelines for ENMs on (NILU main author):
  - Risk Assessment (D3.1)
  - Life cycle assessment (D3.2)
  - Multi-Criteria Decision Analysis Framework (D3.7)
- Contributing to:
  - Risk transfer in insurance models (D3.4)
  - Societal acceptance and risk perception (D3.5)

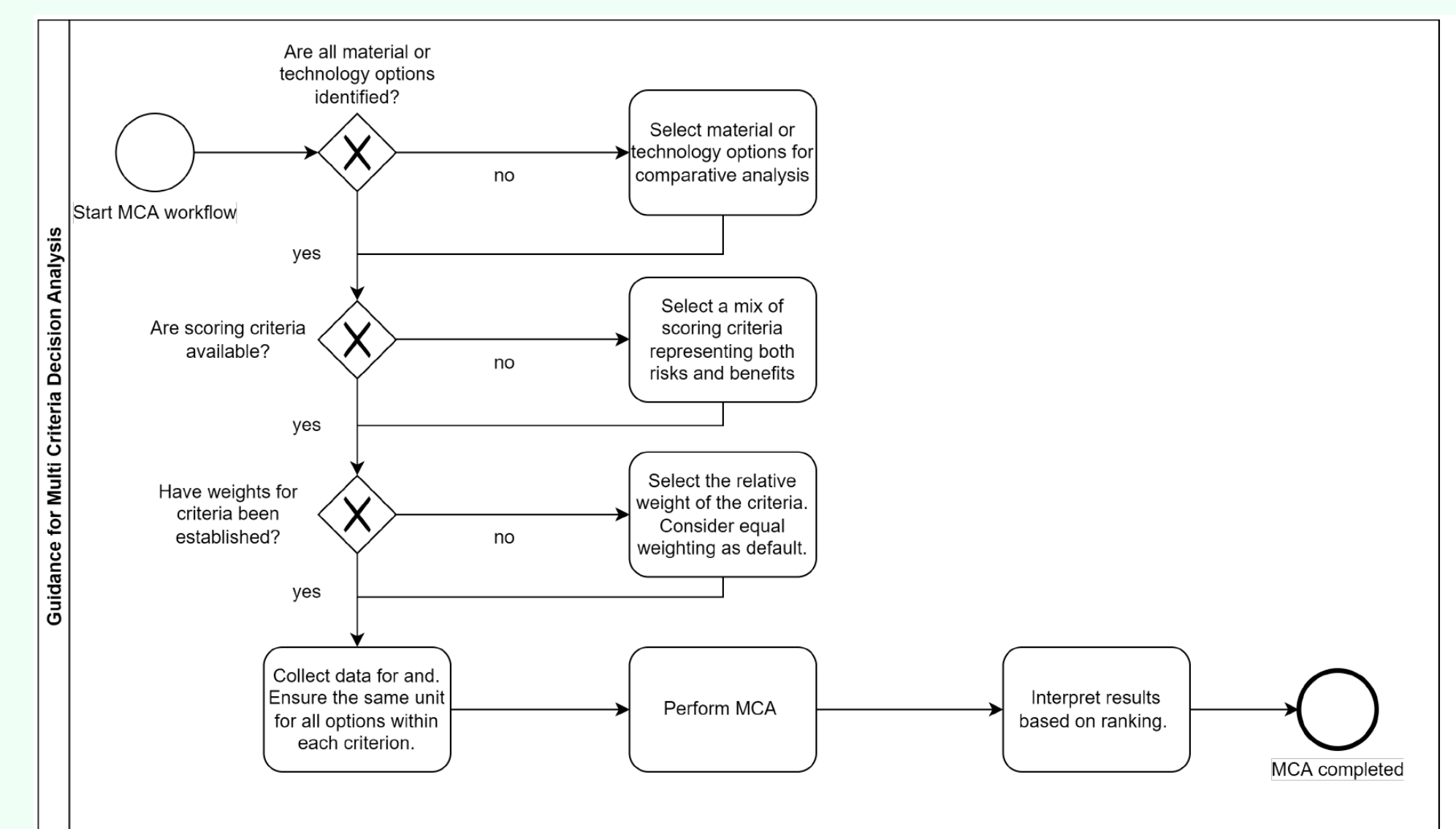
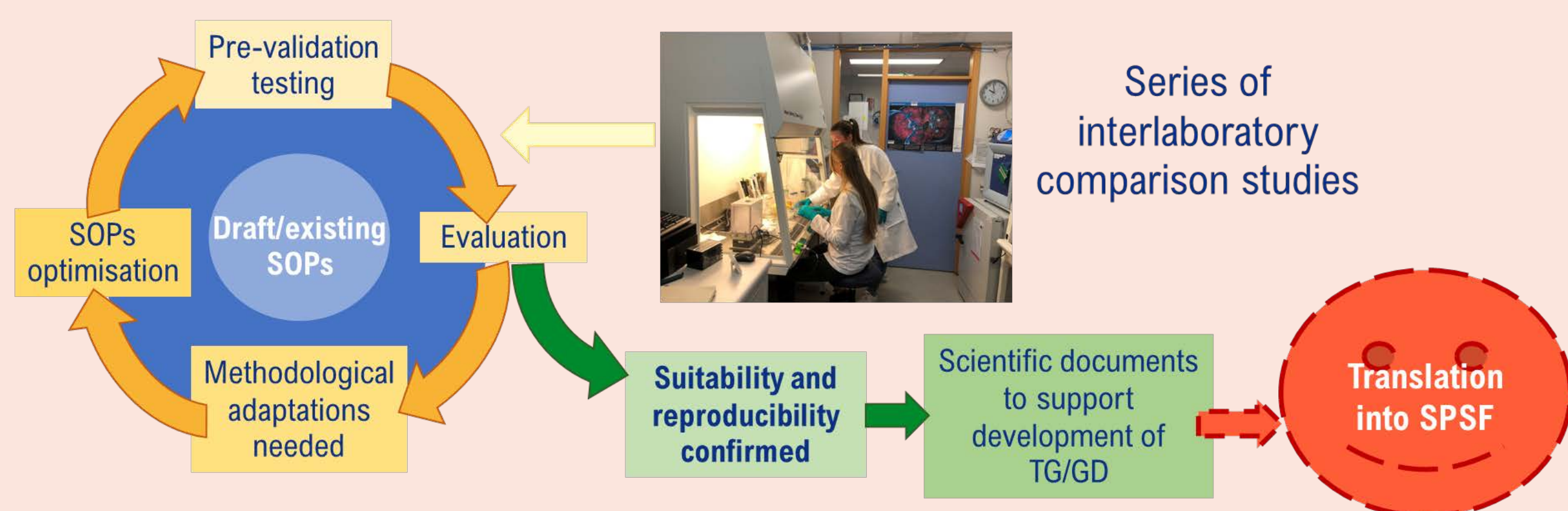


Figure 1: MCDA framework depicted as a decision tree.

## WP5 - HUMAN HAZARD ASSESSMENT

- Evaluation and adaptation to ENMs of standard operating procedures (SOPs) for the assays: colony forming efficiency (CFE), Alamar Blue, Comet assay, mammalian gene mutation HPRT (TG476), micronucleus (TG487) – D5.1, D5.2



- Discussion with the national contact point to support SPSF submission to OECD
- Virtual and on-site courses, and training materials for the assays Comet assay and CFE – D5.6

Video training available at [www.riskgone.eu](http://www.riskgone.eu)



## WP7 - COMMUNICATION AND LINKS TO INTERNATIONAL BODIES

- Set up and maintenance of the RiskGONE website at [www.riskgone.eu](http://www.riskgone.eu)
- Dissemination activities and scientific publications, e.g.:

... and contribution to many other publications (published or in progress)

### Contacts, Health Effects Laboratory:

- M. Dusinska** [mdu@nilu.no](mailto:mdu@nilu.no) - coordinator, WP1 leader
- E. Longhin** [eml@nilu.no](mailto:eml@nilu.no) - project manager, task leader (WP4)
- N. El Yamani** [ney@nilu.no](mailto:ney@nilu.no) - task leader (WP5)
- E. Rundén-Pran** [erp@nilu.no](mailto:erp@nilu.no) - task leader (WP5)
- IMPACT:**
- E.A. Bouman** [eab@nilu.no](mailto:eab@nilu.no) - WP3 leader